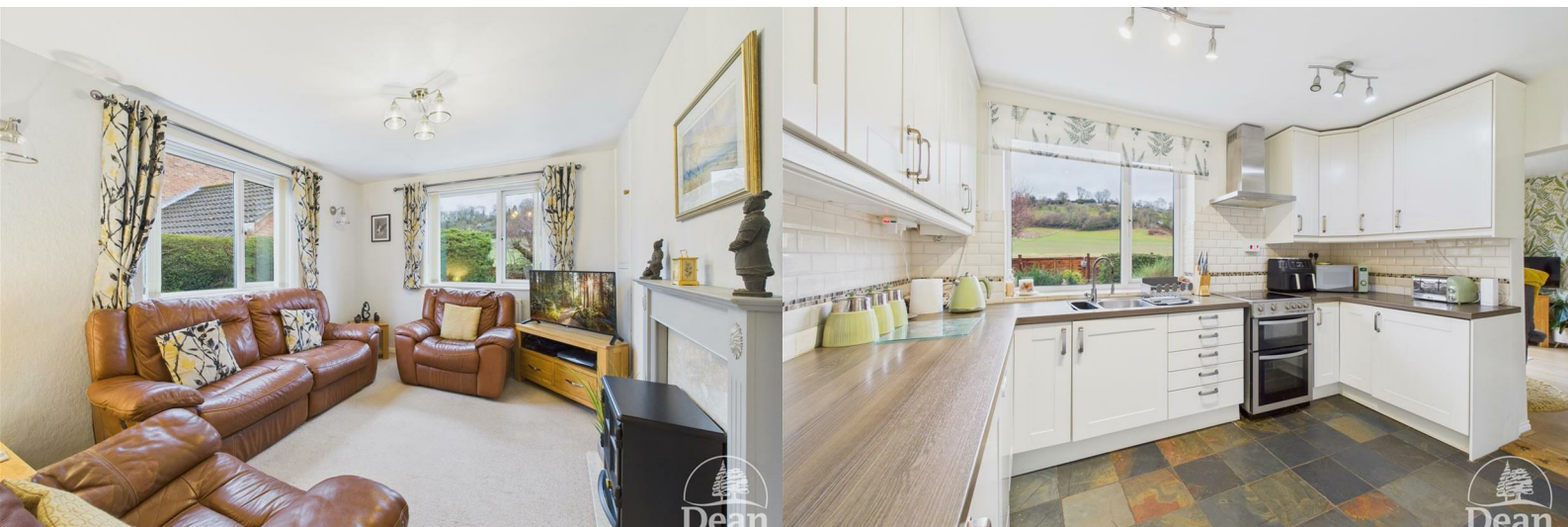




Church Road Longhope, GL17 0LG

£425,000



Situated on Church Road in Longhope, this immaculate detached bungalow presents an exceptional opportunity for those seeking a comfortable and spacious home. With a well-thought-out layout, the property boasts two inviting reception rooms, perfect for both relaxation and entertaining guests.

The bungalow features three generously sized bedrooms, providing ample space for family living or accommodating visitors. The two modern bathrooms ensure convenience and privacy for all occupants.

One of the standout features of this property is the open country side views at the rear. There is extensive parking available for up to five vehicles, making it ideal for families or those who enjoy hosting gatherings. Another benefit to this property are the solar panels.

This delightful bungalow is not only in pristine condition but also offers a peaceful retreat in a lovely setting. Whether you are looking to downsize or seeking a family home, this property is sure to impress. Do not miss the chance to make this splendid bungalow your new residence.



Entrance Hallway :

5'8" x 7'2" (1.73 x 2.19)

Partial tiled floor and mainly laminate flooring, radiator.

Kitchen :

7'8" x 12'1" (2.35 x 3.70)

Fitted with matching wall and base cabinets, sink unit, electric cooker point, extractor hood, plumbing for dishwasher, tiled splash backs, tiled floor, oil boiler, double glazed window to rear aspect with open field views, under stairs cupboard.

Dining Room :

13'7" x 11'6" (4.16 x 3.53)

Radiator, laminate flooring, doors to stairs and garage, double glazed French doors and windows to rear aspect with open field views.

Sitting Room :

13'2" x 10'3" (4.02 x 3.14)

Radiator, double glazed windows to front and rear aspects, built in airing cupboard with hot water tank.

Bedroom 1 :

8'10" x 14'2" (2.70 x 4.32)

Bespoke fitted wardrobes, bedside cabinets and dressing table, radiator, double glazed window to front aspect.

En-suite Shower Room :

6'11" x 3'11" (2.12 x 1.21)

Shower cubicle, low level WC, wash hand basin, wall cabinet, tiled floor, double glazed window, radiator.

Bedroom 2 :

11'5" x 6'3" (3.50 x 1.93)

Radiator, double glazed window to side aspect.

Bedroom 3 :

7'11" x 9'10" (2.42 x 3.01)

Radiator, double glazed window to front aspect.

Bathroom :

7'11" x 5'6" (2.42 x 1.70)

Bath with shower over, low level WC, wash hand basin, tiled walls and floor, towel radiator, two double glazed windows.

First Floor :

Double glazed window to rear, under eaves storage.

Room 1 :

22'8" x 6'3" (6.93 x 1.91)

Limited head height, under eaves storage, double glazed window, radiator.

Room 2 :

6'1" x 11'8" (1.87 x 3.56)

Under eaves storage, radiator, double glazed dormer window.

Outside :

Large block pavior driveway with parking for 4/5 vehicles.

Rear - A lovely open aspect looking over open fields, patio area, graveled area with shrubs, oil tank and drying area, side pedestrian gate. Utility Room with sink unit and plumbing for washing machine and attached wooden shed. Garage/Workshop : Up and over door, Perspex roof, electric car charging point, door to Dining Room with dog flap.

Garage/Workshop :

22'5" x 18'7" (6.84 x 5.68)

Up and over door, Perspex roof, electric car charging point, door to Dining Room with dog flap.



Dean Estate Agents Ltd have prepared the information within this website/brochure with infinite care and without a guarantee of accuracy. Before you act upon any information provided, we request that you satisfy yourself about the completeness, accuracy, reliability, suitability, or availability with respect to the website or the information, products, services, or related graphics contained on our website for any purpose.

These details do not constitute any part of any Offer, Contract or Tenancy Agreement. Photographs used for advertising purposes may not necessarily be the most recent photographs. All photographic images are under the ownership of Dean Estate Agents Ltd and therefore Dean Estate Agents retain the copyright.

Tenanted Property – we are not always able to show the most recent condition of a property due to tenants' privacy and may choose to show the photographs of the property when it was last vacant to at least allow clients some idea of the internal condition at that time.

Energy Performance Certificates are supplied to us via a third party and we do not accept responsibility for the content within such reports.

As with leasehold property or new build development sites, you are likely to be responsible for a contribution to management charges and/or ground rent or a contribution to the development service charge. Please enquire at the time of viewing. You may also incur fees for items such as leasehold packs and, in addition, you will also need to check the remaining length of any lease before you complete a mortgage application form. You must therefore consult with your legal representatives on these matters at the earliest opportunity before making a decision to purchase or incurring costs.

Measurements: Great care is taken when measuring, but measurements should not be relied upon for ordering carpets, equipment etc.

The Laws of copyright protect this material. Dean Estate Agents is the owner of the copyright. This property sheet forms part of our database and is protected by the database right and copyright laws.

Equipment: Dean Estate Agents have not tested the equipment or any central heating system mentioned in these particulars and the purchaser is advised to satisfy themselves as to the working order and condition of any related equipment.

Tenure: We are advised freehold.

Agents Note: Please contact Dean Estate Agents for an updated brochure if applicable.

Road Map



Hybrid Map



Terrain Map



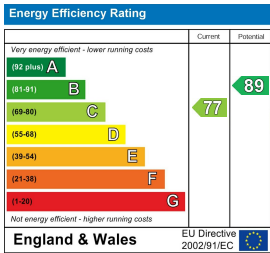
Floor Plan



Viewing

Please contact our Cinderford Office on 01594 825574 if you wish to arrange a viewing appointment for this property or require further information.

Energy Efficiency Graph



These particulars, whilst believed to be accurate are set out as a general outline only for guidance and do not constitute any part of an offer or contract. Intending purchasers should not rely on them as statements of representation of fact, but must satisfy themselves by inspection or otherwise as to their accuracy. No person in this firms employment has the authority to make or give any representation or warranty in respect of the property.

